

OMNIVEO

www.insect-trap.net

(en anglais seulement)



ENGLISH

INSTRUCTION MANUAL

Suitable for all our
Conventional and LED-II models:

OMNIVEO²

OMNIVEO^{2WP}

OMNIVEO³

OMNIVEO^{3WP}

Designed in the Netherlands - Made in China

OMNIVEO Instruction manual vs. 1.1



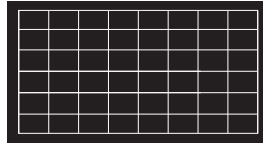
ALCOCHEM
HYGIENE

A. OMNIVEO Unit

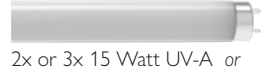


1x OMNIVEO 2 or 3 lamps

B. Replacements parts



1x glueboard



2x or 3x 15 Watt UV-A or



2x or 3x 9 Watt UV-A LED

The OMNIVEO is available in:

2 lamps

2 lamps WP

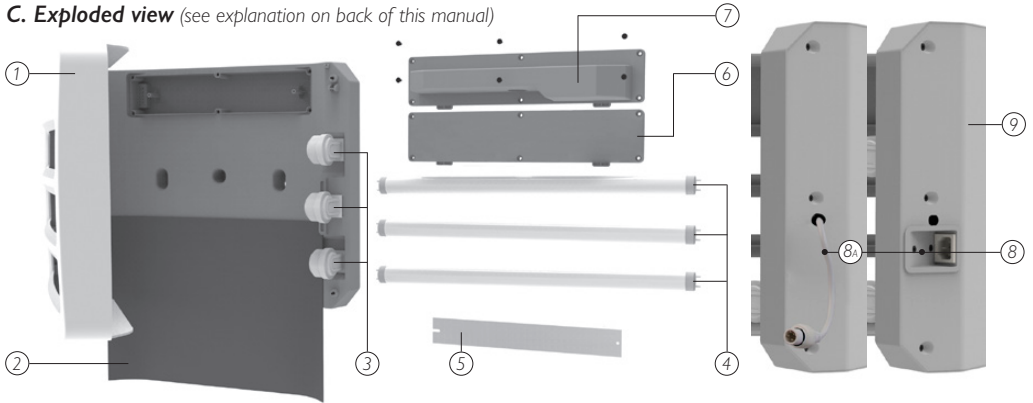
2 lamps LED

3 lamps

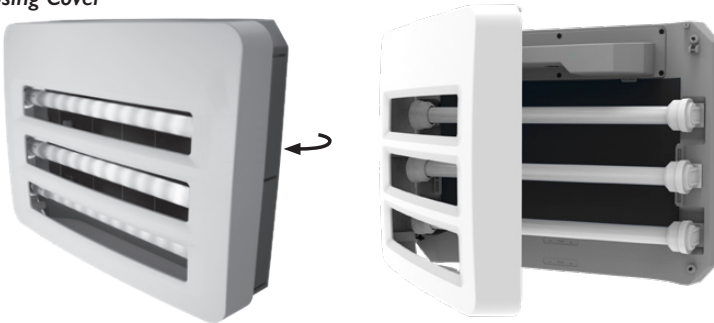
3 lamps WP

3 lamps LED

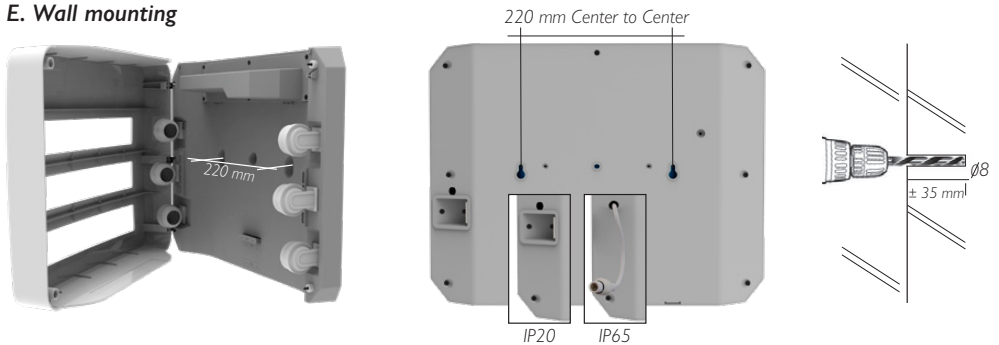
C. Exploded view (see explanation on back of this manual)



D. Opening/Closing Cover



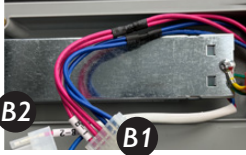
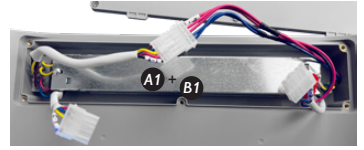
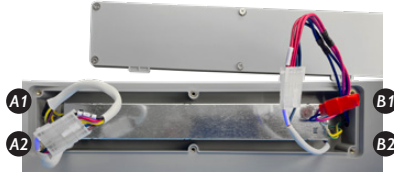
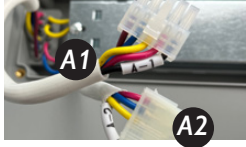
E. Wall mounting



Attention: Before replacing **LED** or **Fluorescent** lamps, be sure you have connect the right wiring scheme for **LED** or **Fluorescent** lamps. (LED lamp doesn't use the ballast).

E. Wiring scheme for LED lamps or Fluorescent lamps

This connection does not affect the connection of the SmartControl module.



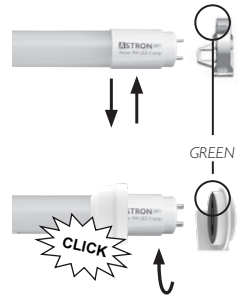
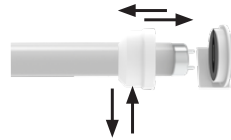
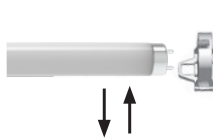
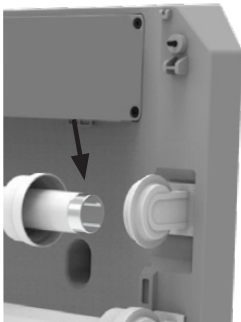
Wiring connection Fluorescent lamps

Connect **A1** to **A2** and **B1** to **B2**
You need to use this connection for Fluorescent lamps with ballast (standard connection).

Wiring connection LED lamps

Connect **A1** to **B1** (A2 and B2 will not be used)
You need to use this connection for LED lamps without ballast.

F. Lamp installation/replacement



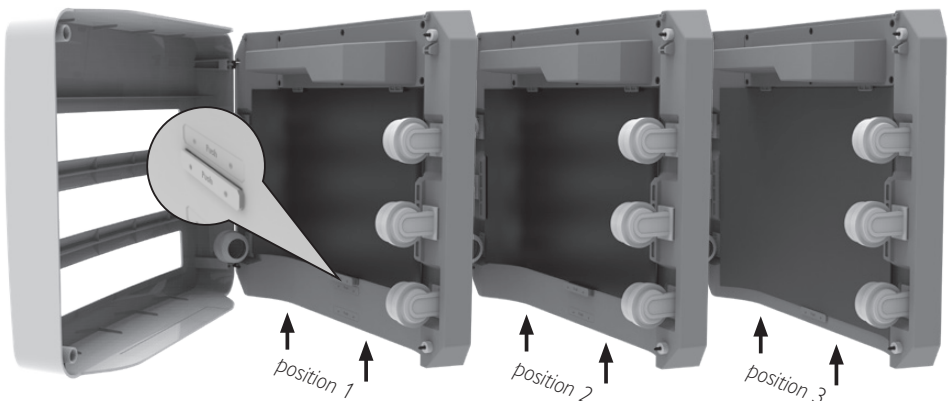
without WP install/replacement

with WP install/replacement

LED Lamp* with or without WP

*By placing the LED lamps, the "AC INPUT" of the lamps, need to be connected in the lampholders with "GREEN" interior.

G. Glueboard install/replace - 3 positions for your favorite glueboard



Positions of different glueboards with the position holders. Place the board via bottom side. Push the one of the holders for your board.

Note: In case of replacement of the lamps use components of the same specifications. Only use genuine spare-parts for service and maintenance.

H. Specifications of the OMNIVEO

Technical name	: Omniveo insect control system
Area coverage	: 50 - 100 m ² (2 lamps) / 80 - 150 m ² (3 lamps)
Light source	: 2x or 3x 15 Watt shatterproof UV-A lamps / 2x or 3x 9 Watt shatterproof UV-A LED lamps
Type of UV lamps	: UV Lamps RoHS certified
Electrical supply	: 220-240 V ~ 50-60 Hz (Other supply on request) / LED: 100-240 V ~ 50-60 Hz
Catch specifications	: Temperature Optimized Glueboard
Power consumption	: Omniveo 2/2WP: max. 32 W - 2 LED: 18 W / Omniveo 3/3WP: max. 47 W - 3 LED: 27 W
Weight	: 4 kg
Material	: Made of ABS plastic + metal
Degree of protection	: IP 20 / IPX5 (<i>IPX5 only for WP versions</i>)
Int. building norm	: acc. EN 60335-2-59 int. std. for insect traps
Lamp life time (hrs)	: Astron lamp: 9,000 / Astron LED: 25,000
Dimensions	: 495 x 135 x 370 mm (L x W x H)
CE-approval	: Yes
Mounting position	: Wall mounted
Cable	: included
Guarantee	: 2 year return to base

Certification and declaration

The Omniveo complies with the EU-directive on machine safety. The unit and spare part components are in full compliance with the CE directive and the WEEE / RoHS directives. The EC declaration of conformity is listed below:

CE declaration of conformity.

We, Alcochem Hygiene, declare, under our responsibility, that the imported product:

Type: Omniveo insect control unit complies with the following European standards:

- EN 60335-1 Safety of household and similar electrical equipment. Part 1: General requirements.
- EN 60335-2/59 Safety of household and similar electrical appliances. Part 2: Particular requirements for insect killers.
- EN 55014 Limits and methods of measurement of radio disturbance characteristics of electrical motor-operated and thermal appliances for household and similar purposes, electrical tools and similar electric apparatus.
- EN 61000-4-5 Surge immunity requirements (1.2/50 µs and 70/100 µs surge)
- EN 61000-3-2 Electromagnetic compatibility (EMC) Part 3: Limits Section 2: Limits for harmonic current emissions (equipment input current <16 A per phase) (IEC 1000-3-2:1995)
- DIN 40050 - IP classification for the units. WP units are executed in an IPX5 execution
- EN 2015/863/EU Restriction of hazardous substances

All according to the definition of the Low Voltage Directive 73/23/EEC, the EMC Directive 2014/30/EU, the RoHS Directive 2015/863/EU and the 2012/19/EU /WEEE Directive

Recommended consumables

Pos.	Description	Part number	Number
2	Glue board (AL-067S, standard in box)	2.06.6702	1
4	UV-A lamp (<i>shatterproof</i>)	2.04.0890	2 or 3 (<i>depending on model</i>)
	UV-A LED WP lamp (<i>shatterproof</i>) IP65	2.04.0508	2 or 3 (<i>depending on model</i>)

Attention

- indoor use only
- for dry areas only
- recycle lamps & starters

Exploded view: Descriptions of exploded view parts see section C

Pos.	Description	Pos.	Description
1	Cover	6	Cover plate (ballast)
2	Glue board	7	SmartControl module (<i>optional</i>)
3	Lamp holders		<i>For more info: www.insect-trap.net</i>
4	UV-A Lamps (2 or 3)	8+8A	Main plug (<i>WP with fixed cable</i>)
5	Ballast (<i>conventional version</i>)	9	Housing

For more information:

www.insect-trap.net